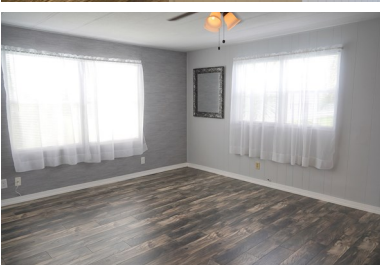
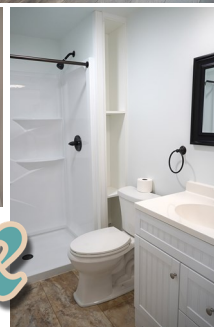
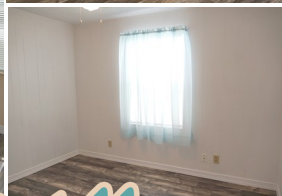


# 93 North Warner Drive

For  
**SALE**

**Home size:** 24' x 52'  
**Square Feet:** 1,240  
**Porch/Extra S/F:**  
**Year:** 1978  
**Bedrooms:** 2  
**Bathrooms:** 2  
**Furnished:** No  
**Flooring:** Laminate wood, tile  
**Laundry:** In Shed  
**Applianc/Equip:** Refridge., range, micro., disposal, dishwasher, washer, dryer  
**Lot Desc:** Interior  
**Lot Size:** 4,345 S/F  
**Irrigation Well:** Yes  
**Assoc Fee (Optional):** \$10.00/yr  
**Monthly Homesite Fee:** \$724.00 (includes cable, garbage, & amenities)

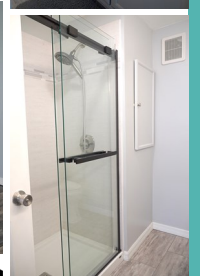


## Pinelake Village

A 55+ Manufactured Housing Community



- Updated home with large living spaces.
- All subfloor replaced with plywood
- Bathrooms beautifully updated
- Kitchen updated with loads of cabinet storage and large kitchen island



Please visit our website for additional info & pictures [www.PinelakeVillage.com](http://www.PinelakeVillage.com)



Please call to arrange a private viewing **Vicki Mattucci, Sales Agent** 772-201-2685 cell or 772-334-1414 office